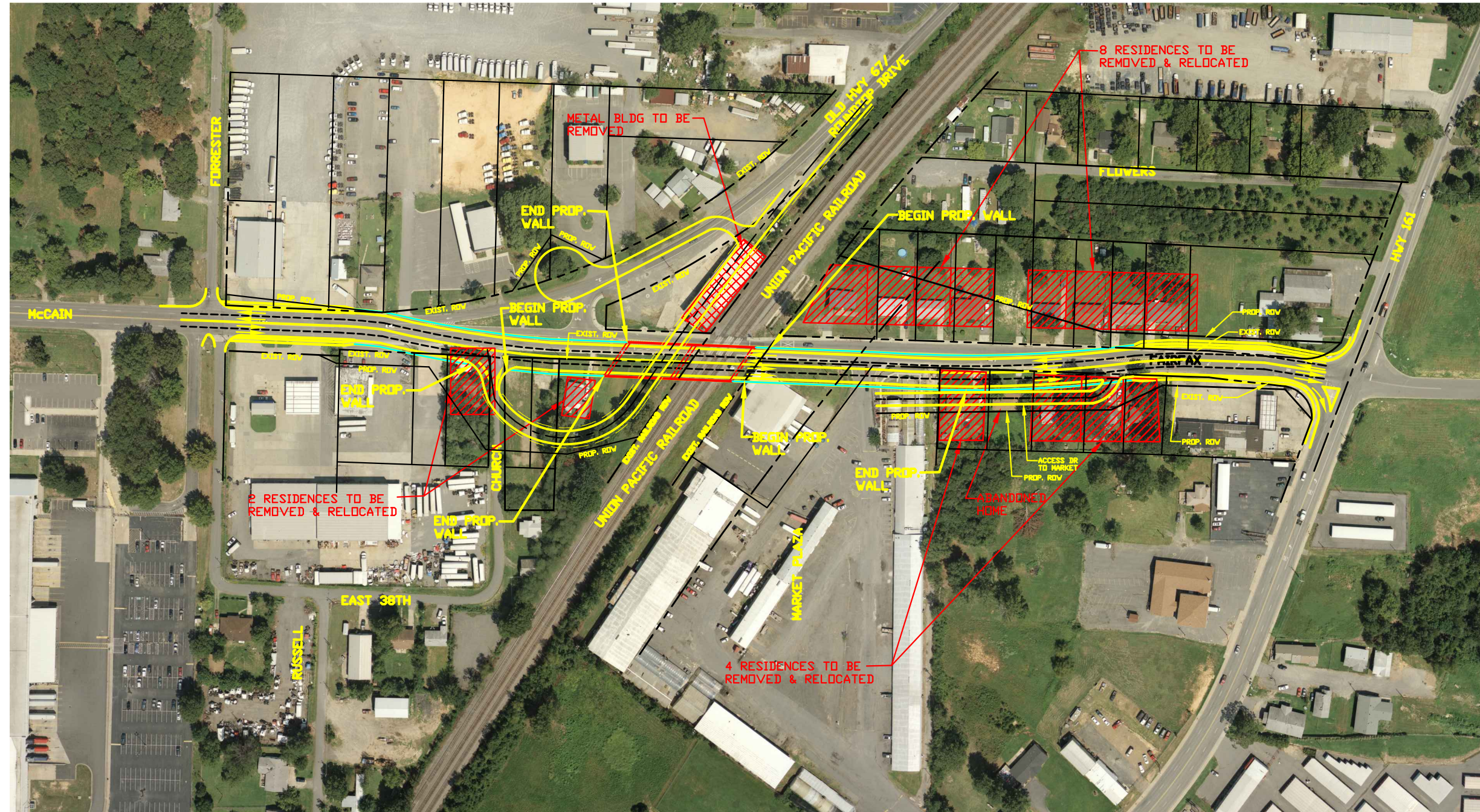


# ALTERNATIVE 4



**LEGEND** POTENTIAL RESIDENTIAL RELOCATEES=14

- RESIDENTIAL RELOCATION
- TO BE REMOVED

**TYPICAL SECTION**

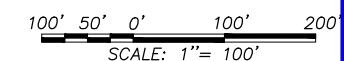
McCain/Fairfax:	ROUNDTOP:
NUMBER OF LANES: 4	NUMBER OF LANES: 2
LANE WIDTH: 11'	LANE WIDTH: 11'
CURB & GUTTER: 18"	CURB & GUTTER: 18"
SIDEWALKS: 5'	SHOULDER: 6'(WHERE APPLICABLE)
	SIDEWALKS: N/A

**ADVANTAGES**

- CONFORMS TO THE CITY OF NLR MASTER STREET PLAN.
- MAINTAINS THE CURRENT ALIGNMENT & CONNECTION TO HWY 161.
- MAINTAINS CONNECTION OF THE RESIDENTIAL NEIGHBORHOOD IN THE MCALMONT COMMUNITY TO THE COMMERCIAL DISTRICT. CURRENTLY, SOME RESIDENTS WALK TO COMMERCIAL FACILITIES ON THE WEST SIDE OF THE RAILROAD.
- BETTER FOR FUTURE BUSINESS & ECONOMIC DEVELOPMENT AS ACCESS TO THE COMMERCIAL DISTRICT IS IMPROVED.

**DISADVANTAGES**

- CAUSES RESIDENTIAL RELOCATIONS.
- MORE COSTLY THAN ALTERNATIVE 2.
- GREATER ENCRDACHMENT INTO THE FARMERS MARKET PROPERTY
- HAS POTENTIAL FOR ENVIRONMENTAL JUSTICE & COMMUNITY IMPACT.



Prepared for:  
**CITY OF NORTH LITTLE ROCK**

REV.	DATE	DESCRIPTION	BY
	061294		JUNE 2012
	JGB		Scale: 1" = 100'
	MPM		Sheet No.: of

Project: CITY OF NORTH LITTLE ROCK  
McCain Blvd - Job 061294

Drawing Title: ALTERNATIVE 4

SHT:

